



CRADLE-TO-COLLEGE
Education



DREW CHARTER SCHOOL

Serving nearly 2,000 Pre-K–12 students through a STEAM-driven, Project-Based Learning model, all Drew Academies rank in the Top 10 within Atlanta Public Schools and the top 20% statewide.

2024 Highlights

- 98% graduation rate
- \$14M in scholarships earned
- 97% college acceptance
- 36 scholarships sponsored by East Lake Foundation

EAST LAKE EARLY LEARNING

The East Lake Foundation and Drew Charter School work closely with our early learning partners to ensure a seamless transition as students matriculate through our cradle-to-college and career education continuum.

2024 Highlights

- Two Drew alumnae hired to serve in the second Early Education Fellowship cohort
- 299 students served
- 79 students are scholarship recipients

ACADEMIC RECOVERY

Programming, support, and targeted tutoring to mitigate the ongoing effects of the pandemic on learning and development.

2024 Highlights

- The Summer Acceleration Academy supported 119 students—95% of 1st graders made 10+ points of growth in both Reading and Math; 100% of 3rd, 4th, and 5th graders made 10+ points of growth in both Reading and Math

ECONOMIC
VITALITY



START:ME PROGRAM

Start:ME East Lake partners with The Roberto C. Goizueta Business & Society Institute at Emory University that offers micro-entrepreneurs the assistance needed to develop viable and sustainable microbusinesses.

2024 Highlights

- 63% led by people of color
- 81% led by women
- 56% led by individuals from low-to-moderate income households

THE RESIDENT AND COMMUNITY SUPPORT PROGRAM (RCSP)

RCSP offers resources and support to residents of the Villages of East Lake (VOEL) mixed-income housing community.

RCSP teams up with community partners to enhance employment readiness educational workshops. Residents receive job resources, financial tools, small business assistance and much more.

2024 Highlights

- 1,586 residents participated in RCSP programming
- Assisted 85 families at VOEL with over \$48,000 in assistance
- 41 community programs offered
- 53 community members trained, upskilled, or reskilled for job opportunities
- Hosted annual egg hunt, back-to-school summer festival, Thanksgiving food distribution and holiday gift events

COMMUNITY
Wellness



EAST LAKE 5K & FUN RUN

In August 2024, the East Lake Foundation hosted the Run for East Lake 5K & Fun Run. Presented by the East Lake Family YMCA, the event brought together 400 community members.

EAST LAKE HEALTHY CONNECTIONS (ELHC)

ELHC ensures all eligible East Lake families have access to health insurance, effectively utilize primary and preventive health care services, properly

manage chronic diseases, and establish contact medical homes.

2024 Highlights

- 365 adults/72 children were connected to health insurance
- 437 individuals were connected with health/dental homes.
- 200 food boxes were provided to residents in need
- 458 individuals participated in wellness programming
- 14 seniors, on average, participated in the weekly Wellness Wednesday opportunities at the VOEL

FIRST TEE – METRO ATLANTA

First Tee — Metro Atlanta is a year-round golf instruction and mentoring program that uses the principles of golf to enhance academic achievement and life skills for youth.

2024 Highlights

- Delivered programming to 13% more youth in 2024 than in 2023.
- 1,208 total participants served
- Awarded \$21,000 in scholastic aid to 5 Drew Charter School graduates

MIXED-INCOME
HOUSING



THE TRUST AT EAST LAKE

Building a Legacy: Expanding Affordable Homeownership

In partnership with The Atlanta Land Trust (ALT), the East Lake Foundation celebrated the completion of Phase I of construction of The Trust at East Lake, the first eight of 40 new, permanently affordable townhomes in East Lake.

Working closely with the Foundation's Resident and Community Support Program at The Villages of East Lake, we collaborate to ensure current East Lake residents are equipped to become homeowners through this partnership.

We are pleased to share that a resident of The Villages of East Lake has become a first-time homeowner at The Trust at East Lake. Phase II construction is underway, with completion of all 40 homes anticipated in 2027.





NEIGHBORHOOD Stories

NEARLY 30 YEARS AFTER THE REVITALIZATION OF EAST LAKE BEGAN, RESIDENTS AND STUDENTS CONTINUE TO BENEFIT FROM THE EAST LAKE FOUNDATION'S HOLISTIC WORK IN THE NEIGHBORHOOD. HERE WE HIGHLIGHT JUST A FEW OF THE MANY EXPERIENCES FROM 2024.

NIKKI DAVIS THE RESIDENT AND COMMUNITY SUPPORT PROGRAM



Nikki Davis, an Atlanta native, has lived in the Villages of East Lake since 2002. "I am the embodiment of the East Lake Foundation," she says.

When she first moved in with her 2-year-old son Jeremiah, she was looking for a fresh start. A loving mother, she had always worked but wanted to grow in her career and find a job that allowed her more time to parent her son.

Determined, she connected with the East Lake Foundation's Resident and Community Support Program (RCSP). She secured a new, higher-paying job working for Georgia Power and transitioned from receiving assistance with rent to paying market rate.

Her son Jeremiah graduated from Drew Charter School, received scholarships to Kennesaw State University, and graduated without student loan debt. Today, he runs his own business.

"The East Lake Foundation is changing lives," Nikki says. "Being in East Lake, you see what it is to be connected in a community."

TOSHIA TILLER AND SHEILA TILLER-TOOKS START:ME EAST LAKE



Sisters Sheila Tiller-Tooks and Toshia Tiller have deep roots in East Lake, dating back to the 1970s when their family moved into East Lake Meadows. The youngest of five sisters, they excelled in school, built families, and pursued careers—Sheila in administration and Toshia in sales.

In 2022, they launched **CornbreadSisters**, inspired by Toshia's beloved cornbread recipe. Their first client was Souper Jenny, and now their cornbread is served in restaurants across Metro Atlanta.

Graduates of the **Start:ME East Lake** program, they gained vital resources to grow their business and won a scholarship. Now enrolled in Georgia Tech's Food and Beverage Accelerator, they aim to bring their cornbread to store shelves.

Their vision? To make CornbreadSisters a lasting legacy for their children and grandchildren. Their advice? "Find a lane and ride until the wheels fall off," says Sheila.

JOEL AND ROSEMARY MCELHANNON DONOR HIGHLIGHT



Joel and Rosemary McElhannon are passionate about their community and believe in the power of education.

When they learned that many students are forced to drop out of college permanently due to lack of financial support, they sprang into action by directing their philanthropy to fill the gap.

Since becoming members at East Lake Golf Club, they have supported the East Lake Foundation and Drew Charter School graduates by providing need-based scholarships for higher education.

"East Lake is an example of what can happen when people of good will from all walks of life come together around a common goal," says Joel. "Our goal is to see every dollar we invest in these scholarships have a transformative impact in the lives of students who need that small amount of money to get across the finish line. We count ourselves as truly blessed to see this all happen."

RESIDENT INSIGHTS SHAPING EAST LAKE'S FUTURE

In summer 2024, in collaboration with Purpose Built Communities®, Focused Community Strategies, and the Lupton Center, the East Lake Foundation conducted 169 East Lake resident interviews to understand how they feel about the needs and assets of our neighborhood. The Flourishing Neighborhood Index (FNI) survey captured resident voice across economic, social, and structural indicators. Resident and partner listening sessions took place through the end of 2024 and early 2025 to collect feedback and flesh out the results of the survey.

Highlights of the survey include neighbors feeling a sense of pride in the educational resources available in East Lake and a deep sense of place, meaning that they feel connected to and a part of East Lake. It also spotlighted opportunities for growth.

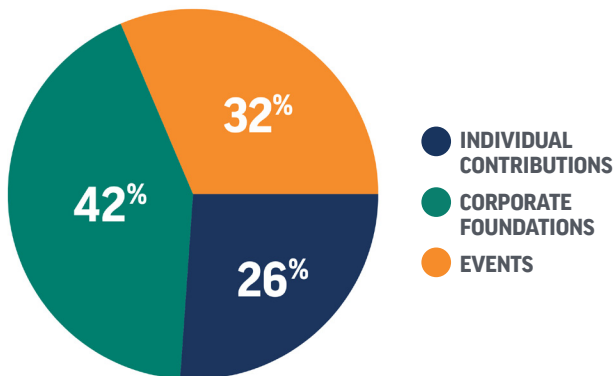
This community-based data will guide the Foundation's strategic direction and collaboration with partners and residents. We will work diligently to use the information gained to center resident voices and expand knowledge and support of the Foundation's work and mission.



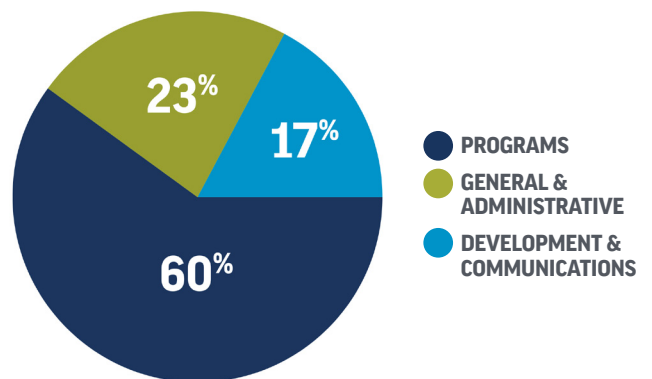
FOUNDATION Financials

TRANSPARENCY WITH THE ALLOCATION OF RESOURCES IS FUNDAMENTAL FOR RESPONSIBLE STEWARDSHIP OF THE FUNDING THAT SUPPORTS OUR WORK.

REVENUE:
\$5,207,677*



EXPENSES:
\$4,505,947*



*These unaudited numbers reflect the revenue and expenses of the East Lake Foundation and its charitable contributions to its partners in the East Lake Initiative.



FOUNDATION Support

The East Lake Foundation's work would not be possible without the generous support of the individuals, businesses and partners that believe in our mission and understand the value of giving back to the community. Scan the QR code, or visit www.eastlakefoundation.org/annual-reports/2024 for more information about our Donors, Partners, and Board of Directors.

